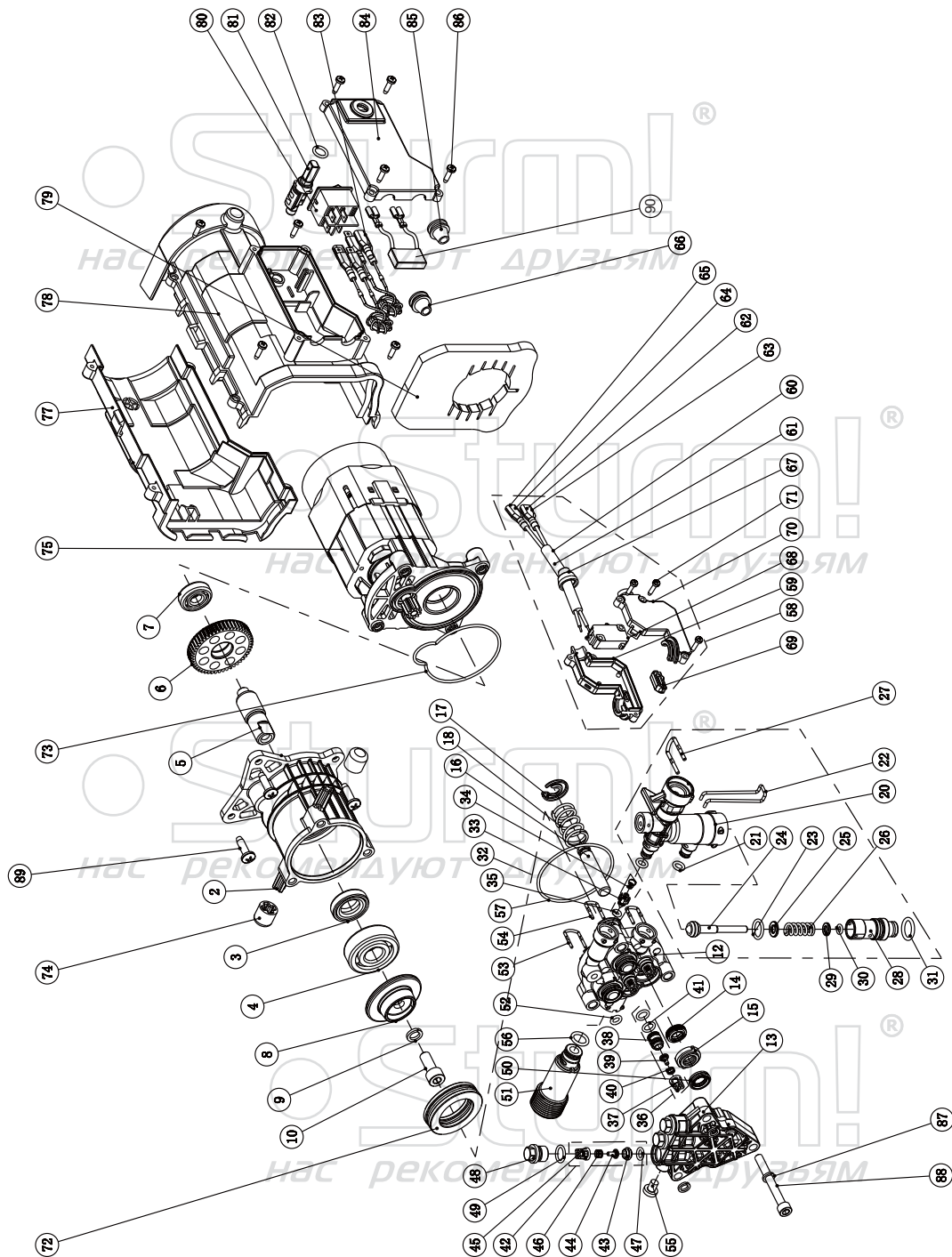


## PW9217

NO.	DESCRIPTION
1	HIGH PRESSURE HOSE
2	BACK HOUSING
3	POWER CABLE
4	POWER CABLE JACKET
5	POWER CABLE PRESSPLATE
6	SCREW
7	MP101 MOTOR&PUMP ASSY
8	SWITCH KNOB
9	FRONT HOUSING
10	BUTTON
11	FRONT DECORATIVE PLATE
12	CLEANING PIN
13	ADJUSTABLE NOZZLE
14	EXTENSION WAND
15	GUN
16	HANDLE
17	LT-301 SOAP BOTTLE
18	WHEEL COVER
19	WHEEL
20	POWER CABLE HOOK
21	WARNING LABEL
22	RATING LABEL
23	SCREW
24	ACCESSORIES HOLDER
25	WATER INLET CONNECTOR&FILTER

RU-ST20161128



## PUMP FOR PW9217

NO.	DESCRIPTION	NO.	DESCRIPTION
2	OIL CYLINDER	47	O RING 6X1.8
3	OIL SEAL 30X17X7	48	CHECKING VALVE CAP
4	BEARING 6302Z	49	O RING 9.5X1.8
5	GEAR SHAFT	50	OIL SEAL 10X16X4
6	BIG GEAR	51	INLET HOSE
7	BEARING 629-2Z	52	O RING 5.5X2
8	SWASH PLATE	53	U PIN
9	GASKET 8	54	U PIN
10	BLOT M8X20	55	BOLT M6X8
12	PUMP BODY	56	O RING 10X2.2
13	PUMP COVER	57	O RING 58X2
14	PLUNGER OIL SEAL 10X16X4	58	ON-OFF SWITCH ASSY
15	OIL SEAL BRACKET	59	SWITCH-DOWN COVER
16	PLUNGER	60	SWITCH WIRE ASSY
17	PLUNGER CHUCK	61	SWITCH WIRE
18	PLUNGER SPRING	62	FEMALE TERMINAL
20	OUTLET HOSE	63	COVER FOR FEMALE TERMINAL
21	O RING 5.5X2	64	MALE TERMINAL
22	BAYONET LOCK	65	COVER FOR MALE TERMINAL
23	O RING 12X2	66	COVER FOR OUTLET WIRE
24	RELIEF VALVE CORE	67	COVER FOR SWITCH
25	LIMIT RING	68	ON-OFF SWITCH
26	RELIEF VALVE SPRING	69	ON-OFF SWITCH PUSH ROD
27	U PIN	70	SWITCH- UP COVER
28	RELIEF VALVE CAP	71	BOLT ST2.9X13
29	RELIEF VALVE GASKET	72	BEARING 51106
30	O RING 4.5X1	73	SEAL RING
31	O RING 12X2.5	74	DAMPING RING
32	BACK PRESSURE VALVE ASSY	75	MOTOR
33	BACK PRESSURE VALVE CORE	77	FAN COVER DOWN
34	BACK PRESSURE VALVE SPRING	78	FAN COVER UP
35	O RING 3.5X1.9	79	FAN COVER FILTER
36	INLET CHECKING VALVE ASSY	80	MAIN SWITCH
37	CHECKING VALVE BRACKET	81	SWITCH DRIVING LEVER
38	INLET CHECKING VALVE SEAT	82	O RING 8X2
39	CHECKING VALVE CORE	83	INDUCTANCE ASSY
40	CHECKING VALVE SPRING	84	SWITCH COVER
41	O RING 6X1.8	85	OUTLET WIRE COVER
42	OUTLET CHECKING VALVE ASSY	86	BOLT ST3.5 X13F
43	CHECKING VALVE SEAT	87	GASKET 6
44	CHECKING VALVE CORE	88	BOLT M6X55
45	CHECKING VALVE BRACKET	89	BOT ST5.5X20
46	CHECKING VALVE SPRING	90	CAPACITOR ASSY